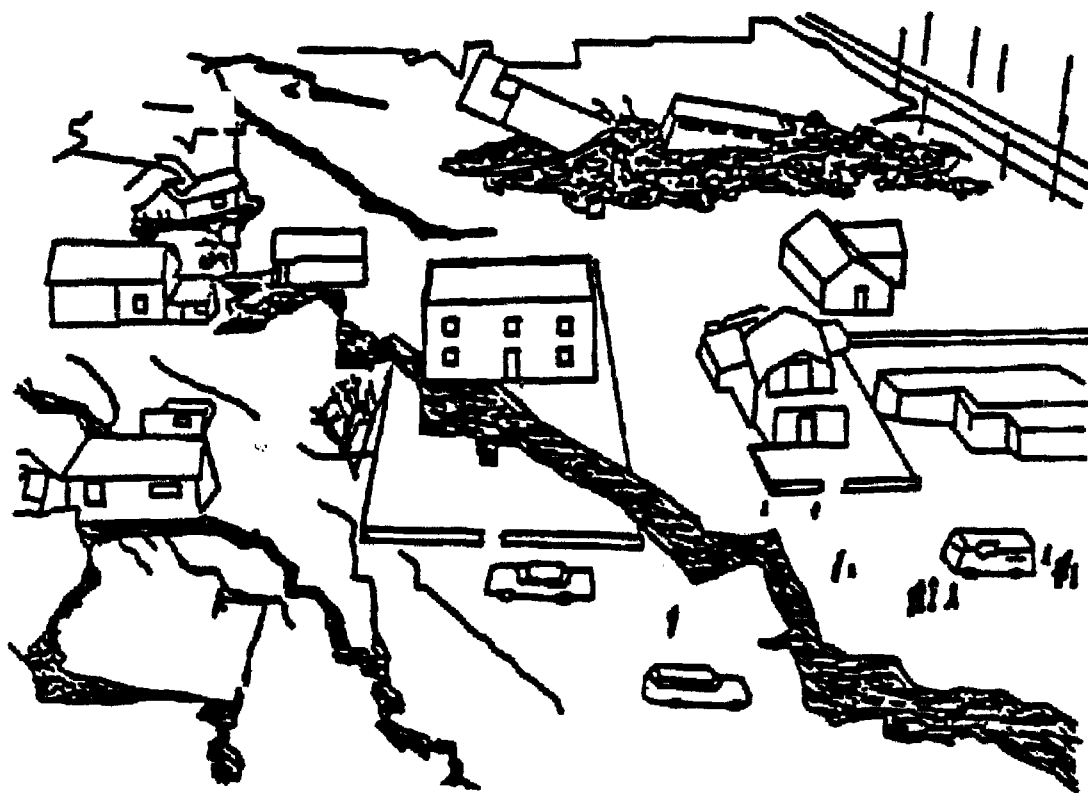


**EARTHQUAKE VULNERABILITY STUDY
FOR THE AREAS OF PONCE, ARECIBO
AND AGUADILLA, PUERTO RICO**

**A Study Prepared For The
Department Of Natural Resources**

June 1988



Jose Molinelli, Ph. D.

Consultant

San Juan, Puerto Rico