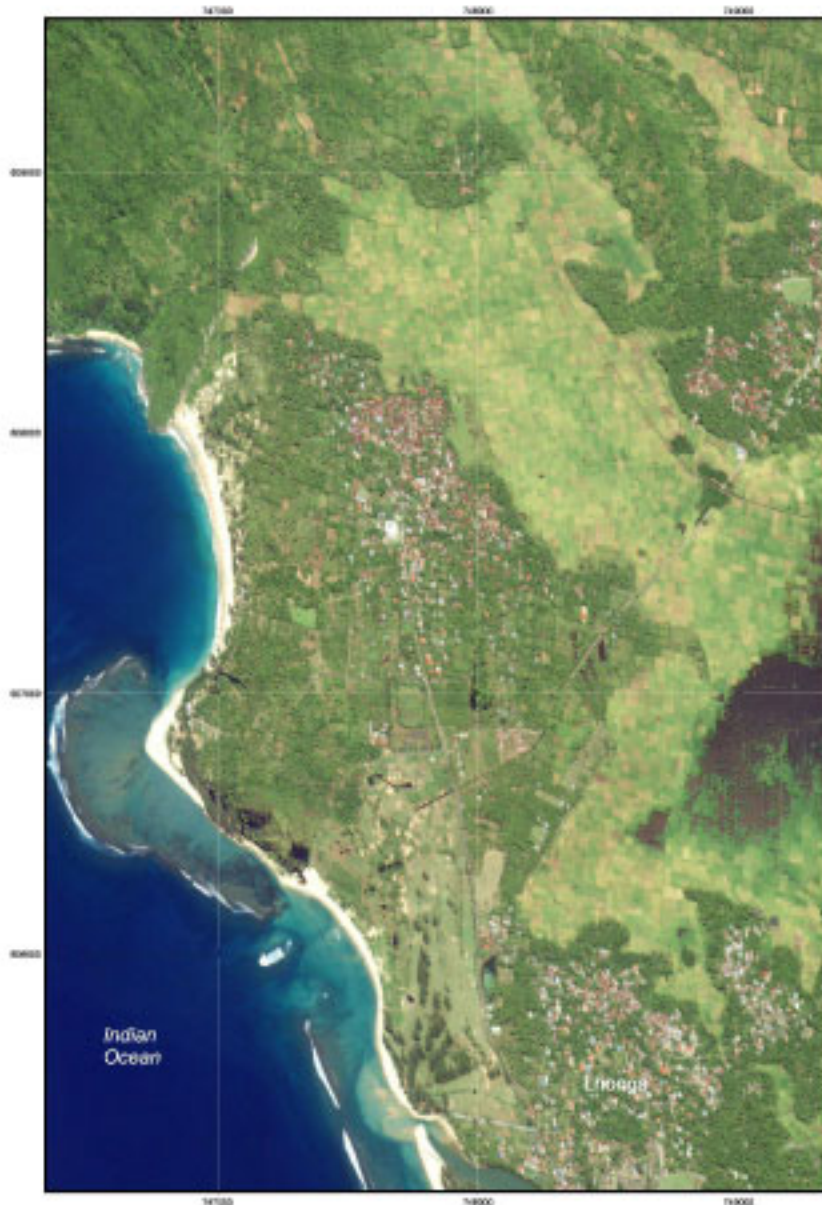


Maps, Satellite Imagery, Photos



Indonesia - Banda Aceh Subset 2

IKONOS - January 10, 2003 - PRE-DISASTER IMAGE



1 : 10.000

IKONOS - December 29, 2004 - POST-DISASTER IMAGE



Center for Satellite based Crisis Information
- Emergency Response & Disaster Monitoring -

German Remote Sensing Data Center
German Aerospace Center

Legend:

- Banda - Subsets
- Damaged Area

— Coastline before Tsunami

Interpretation

The map shows an area north of the village of Lhoega on the northwestern coast of Sumatra (Indonesia) before and after the devastating Tsunami (tsunami wave, which struck many countries in the Indian Ocean on December 26, 2004). The IKONOS images were taken on January 10, 2003 and December 29, 2004, respectively.

The region of Banda Aceh is one of most severely damaged areas. The Tsunami washed up to two kilometers inland and destroyed major parts of the coastal urban, including settlements, forests and farmland.

Scale

0 100 200 300 400 500 m

1 : 10.000

Projection: UTM Zone 48 N
Datum: WGS 84

Data Source

IKONOS imagery provided through

CRISP
National University of Singapore

SPACE IMAGING
Real Information. Your World.

Map created December 26, 2004 for ZNIG/UR/OC
updated January 4, 2005 (Version 03)

Estimated Collapsed Structures—Banda Aceh

Primary Impact Zone (PIZ)

6,466 ha

36,016 structures digitized (before tsunami)

5.6 structures per ha (before tsunami)

29,545 structures collapsed

82% structures collapsed in PIZ

Notes:

- The number of collapsed buildings does not include number of structures severely damaged or destroyed in the Primary Impact Zone that cannot be directly observed from satellite imagery.
- The boundary for the Primary Impact Zone does not include Lho Nga.
- See attached methodology.



29,545
structures collapsed, est



THE WORLD BANK

The World Bank Office Jakarta
Jakarta Stock Exchange Building
Tower 2, 12th Floor
Jl. Jenderal Sudirman Kav. 52-53
Jakarta 12190 - Indonesia

Phone: +(62-21) 5299-3000

Fax: +(62-21) 5299-3111

Contact: Andre A. Bald

Source:

QuickBird (60cm), Landsat 7,
ETM+, and SRTM (90m DEM)

Imagery and Mapping by:



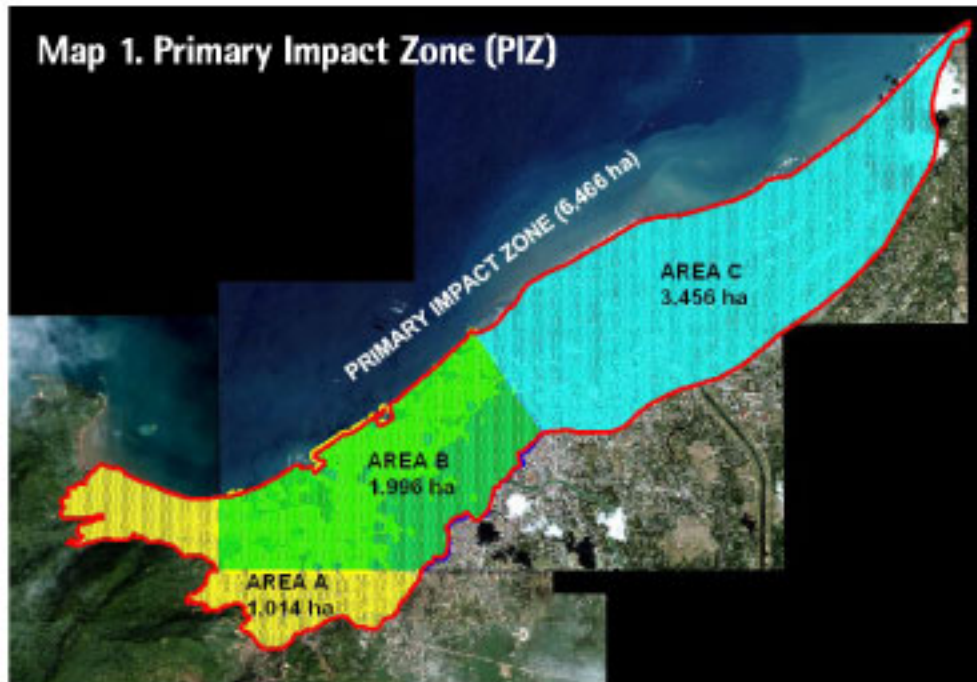
Jakarta, Indonesia

Phone: +(62-21) 7884-6179

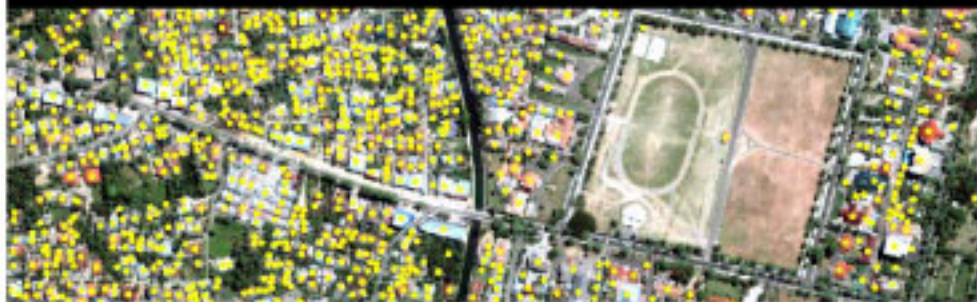
Fax: +(62-21) 7884-6184

Email: perry@earthline.info

Map 1. Primary Impact Zone (PIZ)



Map 2. QuickBird Before (Large Scale)



Map 3. QuickBird After (Large Scale)



Methodology

Estimated Collapsed Structures

Methodology

The Primary Impact Zone (PIZ) was determined by observations based on QuickBird (60cm), Landsat 7, ETM+, and SRTM (90m DEM). The range of heavily damaged structures was estimated and digitized using QuickBird imagery viewed at large scale (maps 2 & 3). For the areas beyond available post-tsunami QuickBird coverage (map 1, area C), the PIZ was estimated based on interpretation of post-tsunami Landsat 7 and low elevation (<25m) areas defined by DEM.

All observable existing structures pre-event were digitized (map 2) using QuickBird at large-scale, covering areas B&C on map 1.

For areas within the PIZ, not covered by pre-event QuickBird (map 1, area A), an estimated density of 4 structures per ha. was applied

Available pre and post-event QuickBird images (map 1, area B) were analyzed, and remaining structures post tsunami (map 2 & 3) were digitized and counted. A ratio of pre and post-event structures collapsed in the PIZ was calculated (82%), and applied to the remaining area (map 1, area A & C) of the PIZ not yet covered by pre and post-event QuickBird.

Summary

Primary Impact Zone (PIZ)	6,466 ha
structures digitized (before tsunami)	36,016
structures per ha (before tsunami)	5.6
29,545 structures collapsed	
82% structures collapsed in PIZ	



THE WORLD BANK

The World Bank Office Jakarta
Jakarta Stock Exchange Building
Tower 2, 12th Floor
Jl. Jenderal Sudirman Kav. 52-53
Jakarta 12190 - Indonesia

Phone: +(62-21) 5299-3000
Fax: +(62-21) 5299-3111

Contact: Andre A. Bald

Source:
QuickBird (60cm), Landsat 7,
ETM+, and SRTM (90m DEM)

Imagery and Mapping by:



Jakarta, Indonesia
Phone: +(62-21) 7884-6179
Fax: +(62-21) 7884-6184
Email: perry@earthline.info

Critical Infrastructure Destroyed



Coastal Communities Devastated



Homes and Shops Turned to Rubble



Earth Quake Damage, Leveling Shops

