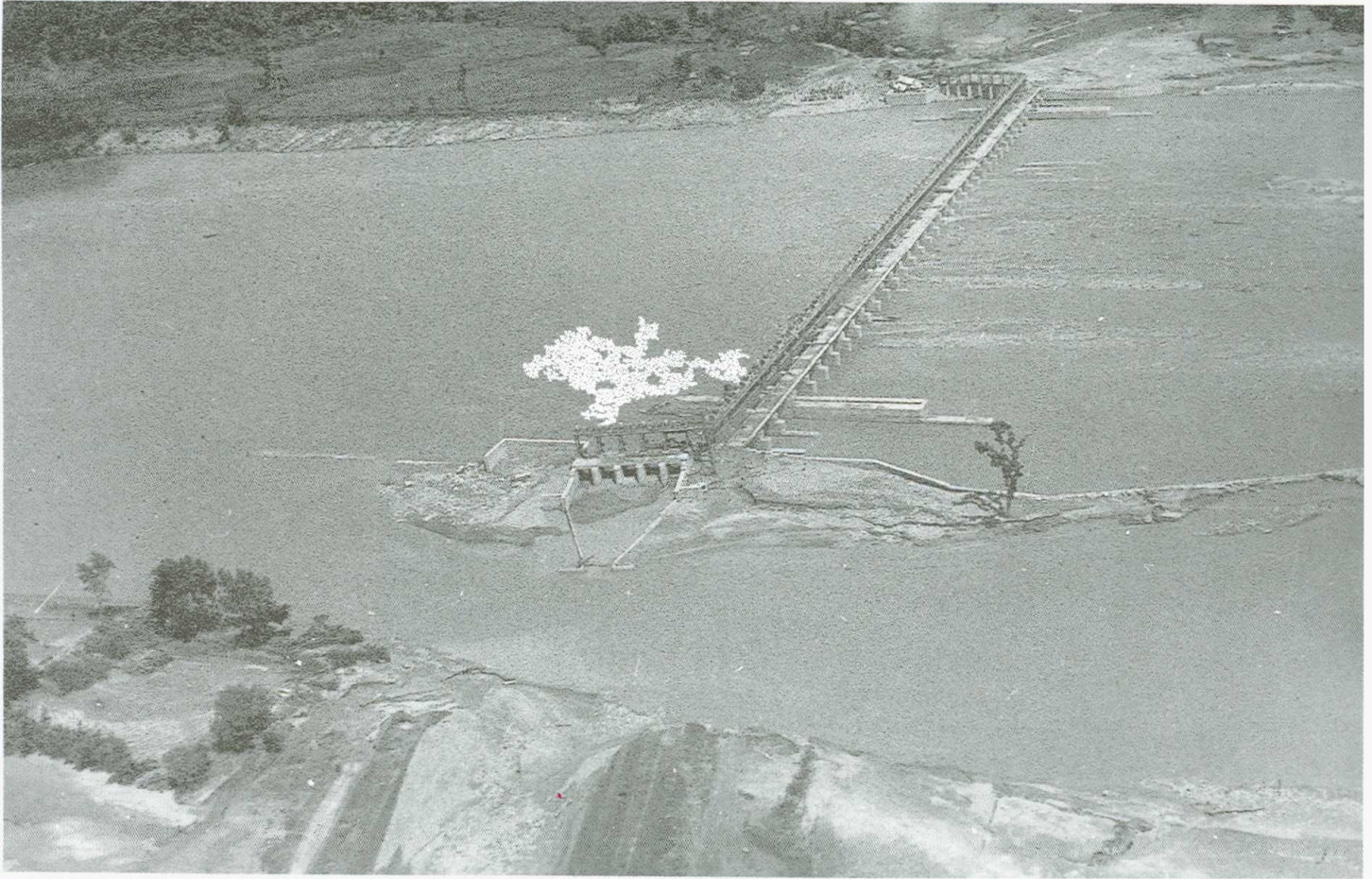


Bagmati Barrage

Year of Construction (1983 - 1992)

l = 404 m, gates 36 @ 9 m

command area: 68,000 ha



Damage to main canals of Bagmati Irrigation Project by high flood. Bagmati Barrage and western canal headregulator. Western banks of Bagmati River and part of West Main Canal were washed away.





Wooden logs trapped in the regulating gate of Bagmati Barrage.

