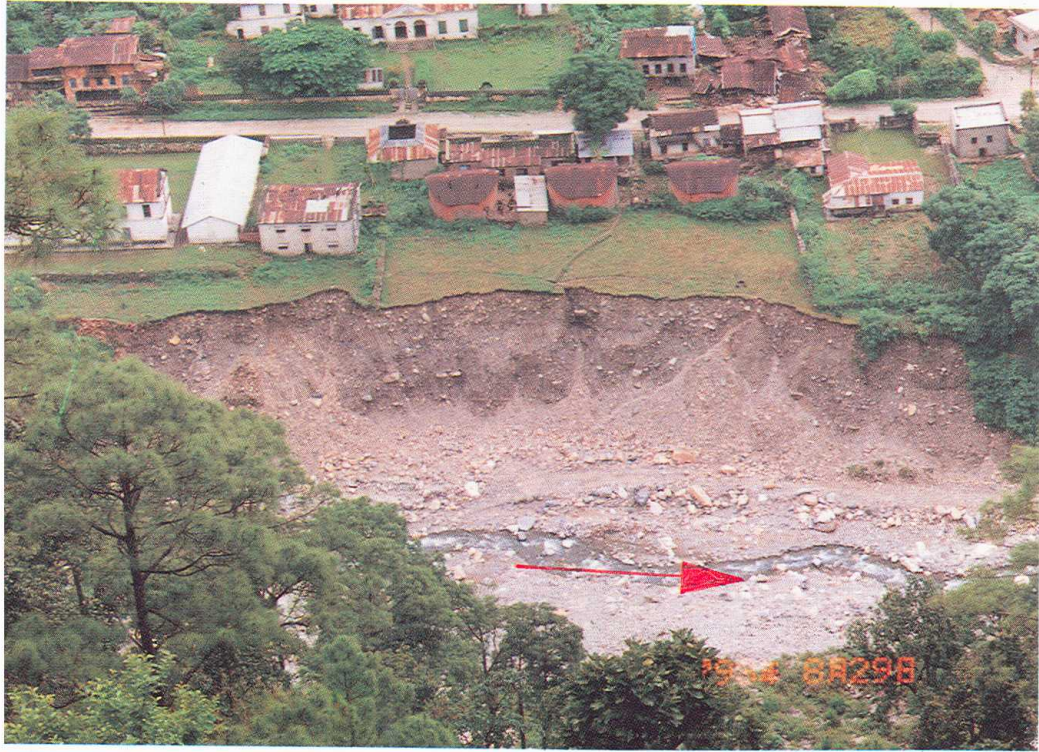
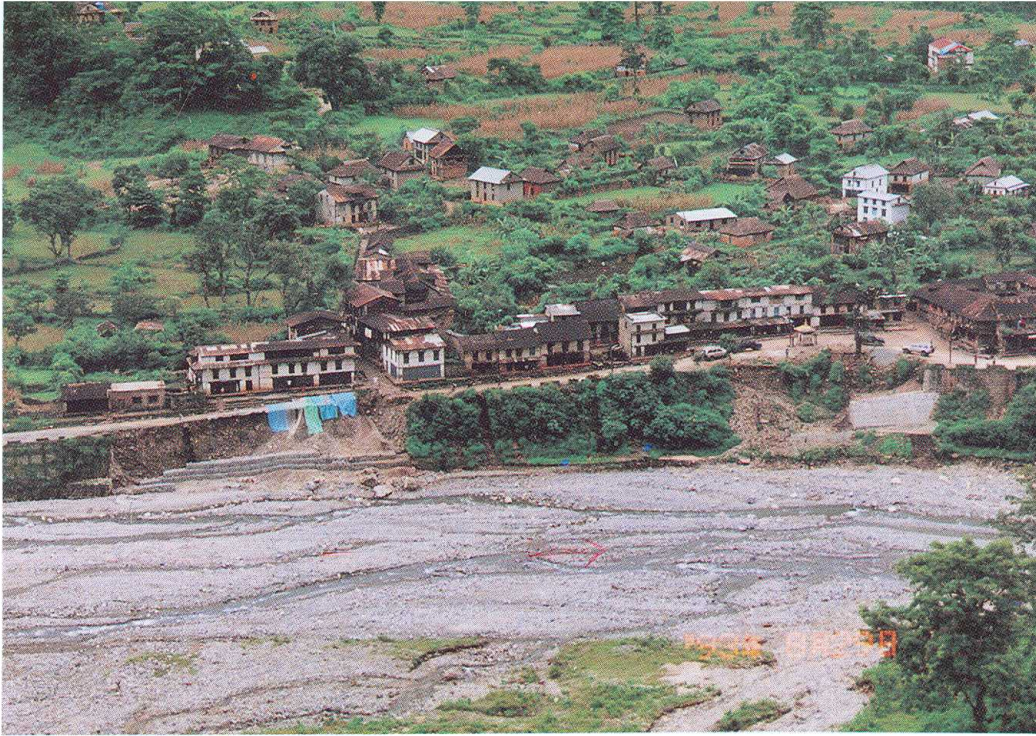


Bhimphedi



The above photos show River terrace eroded by Bhimphedi Khola near Bhimphedi town. Bhimphedi Khola is one of the tributary of East Rapti River.



Damage to Bhimphedi by debris flows of Chisapani Khola, a tributary of Bhimphedi Khola

Markhu



Kulekhani Reservoir

Water level rose by about 26 meters during a half day from late in the afternoon of 19 July to early in the morning of 20 July.