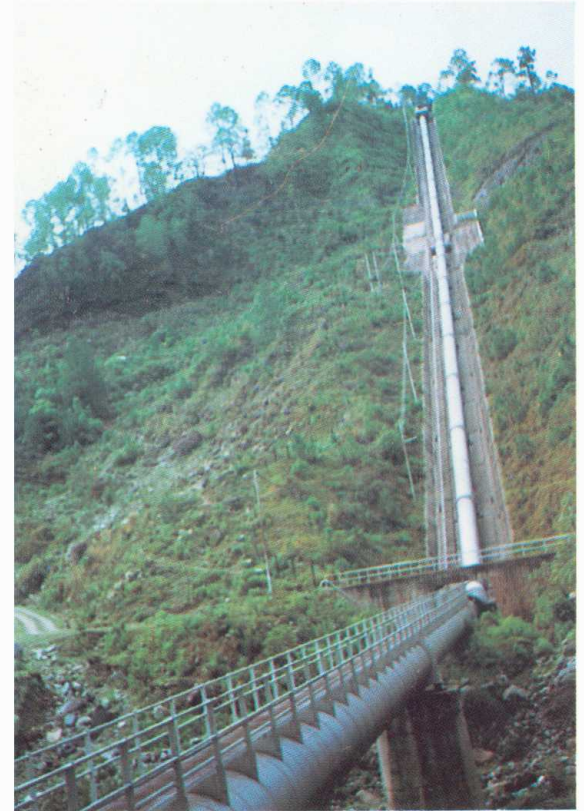


3. KULEKHANI HYDROELECTRIC PROJECT

Jurikhet Khola



Damage to check dams of Jurikhet Khola by debris flow.



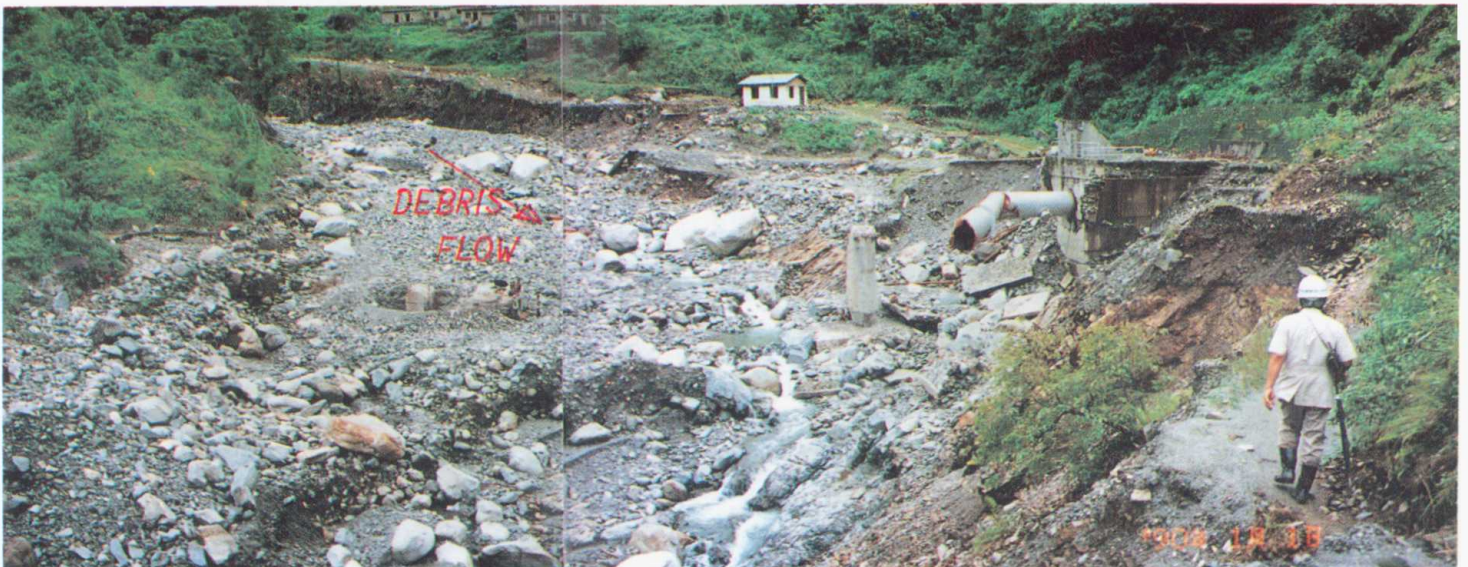
Penstock Pipe before Disaster



About 100 m long penstock pipe was damaged by debris flow at Jurikhet. Upper portion of the pier has been cut off by abrasive action of debris flow.



A collapsed check dam in Jurikhet Khola



Damaged portion of penstock pipe and anchor block causing shutdown of 92 Megawatts of Hydroelectricity generation.