

Bhaise Bridge



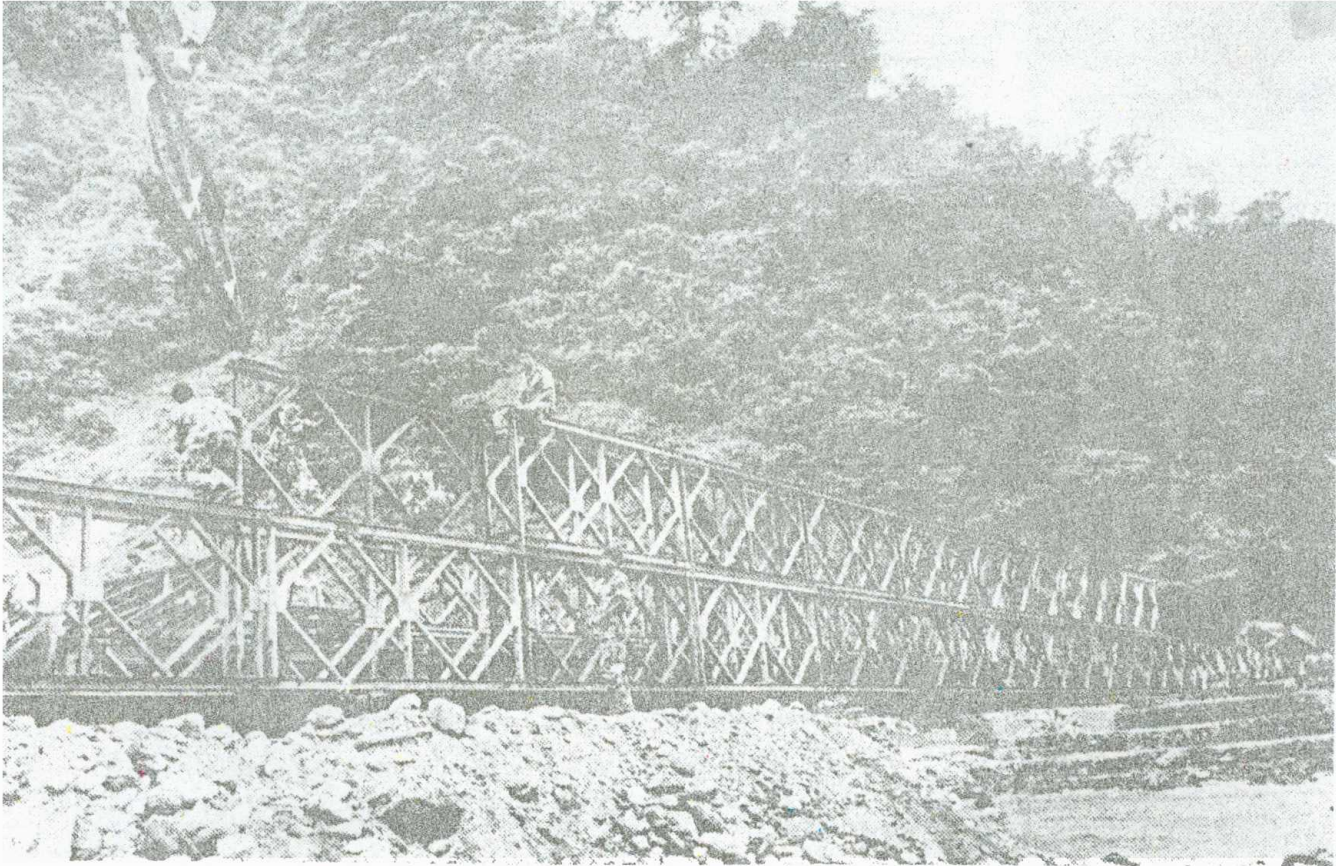
Huge debris flow at East Rapti River destroyed Highway Bridge of Bhainse (L = 61 m) completely. Newly erected Bailey Bridge (L=37m) is seen at the extreme right.



Damage to houses situated at Bhainse by debris flow of East Rapti River.



Slope failures and gulley erosion near Tistung.



Installation of Bailey Bridge over Rapti River in Bhainse nearing completion.



Section of Tribhuvan Highway damaged by debris flow near Palung