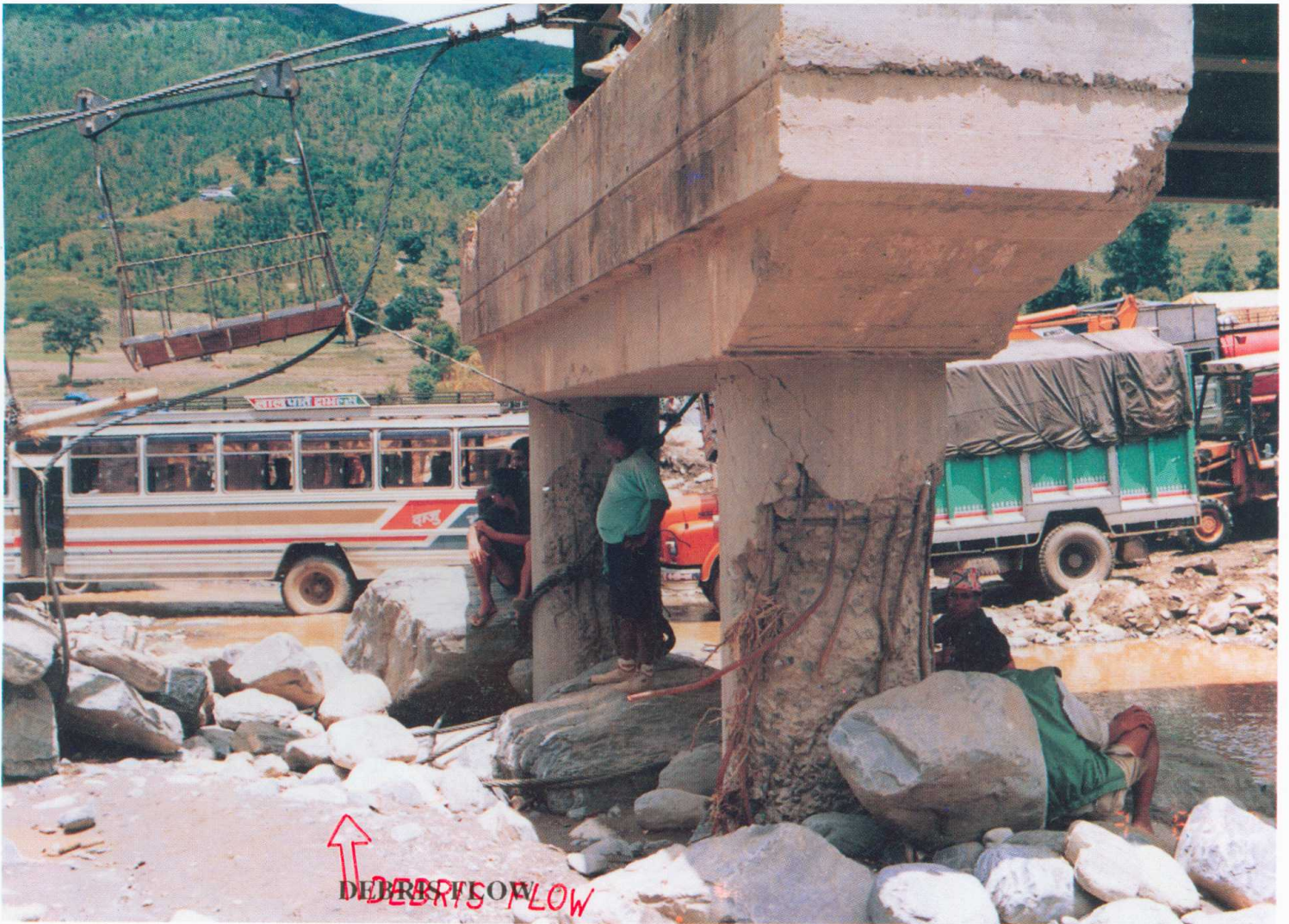


Temporary diversion road to resume the daily traffic at Mahadevbesi.



Oil tankers proceeding towards Kathmandu across Agra Khola at Mahadevbesi.



The effect of large sized boulders to twin cylindrical pier of Mahadevbesi Bridge



Newly established Bailey Bridge over Agra Khola at Mahadevbesi.