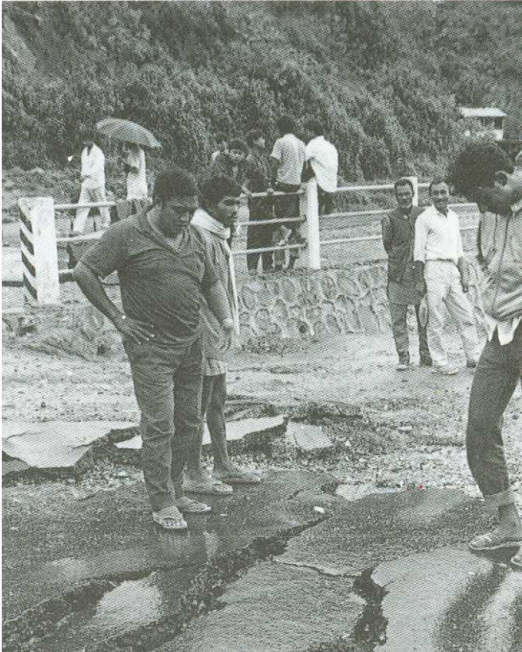


1. PRITHVI HIGHWAY

Naubise



Rains wreak havoc: The road head at Naubise of the Prithvi Highway gives way to Chasms Falling victim to the torrential rains recently, while the bridge seen in the picture stands as vulnerable.



Mahadevbesi Bridge

Three out of four spans were washed away. Erosion on the other side of Mahesh Khola implies the severity of debris flow of Agra River.



Prithivi Highway was seriously damaged between Naubise and Mugling (L = 84 km): Three major bridges of Mahadevbesi, Belkhu and Malekhu were destroyed; Road was heavily eroded by flood of Trishuli river at many locations; Major landslides took place to block the traffic in Jogimara.



Temporary cable crossing at Mahadevbesi