

FIG. 10

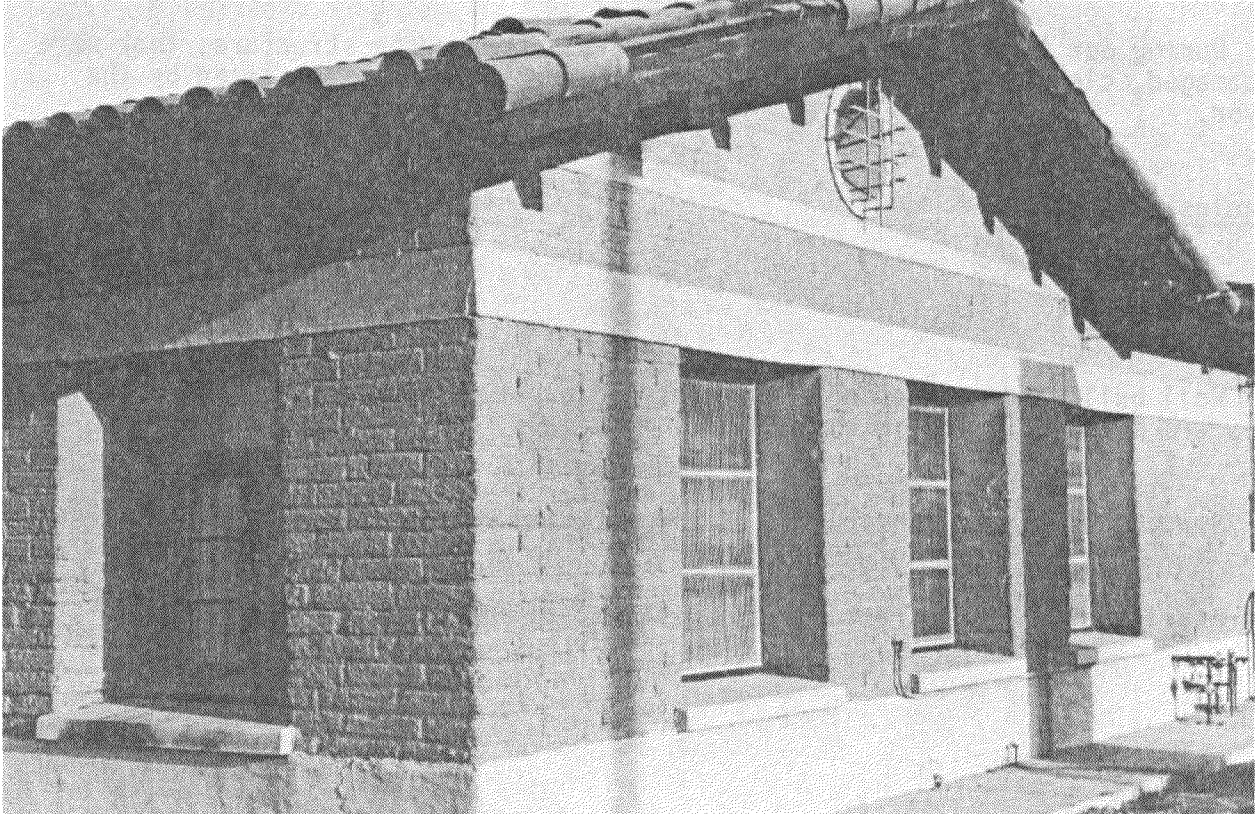


FIG. 11



During our tour of the town we saw several other adobe structures that were undamaged, clearly not all adobe structures were in trouble as stated by the Mayor.

### Conclusions

Well built and maintained structures can survive seismic activity whether they are built of adobe or conventional materials.

Structures poorly constructed of any material may fail during earthquakes.

Poorly maintained structures are destined to failure.