



FIG. 10

Two storied adobe building with timber floor and ceiling. Timber bond beams are seen in the rear wall (right) , provided at two levels in the upper story, however of inadequate continuity. No lintel exists over the entrance door. Adobe blocks from the collapsed walls are seen in the foreground (right) .

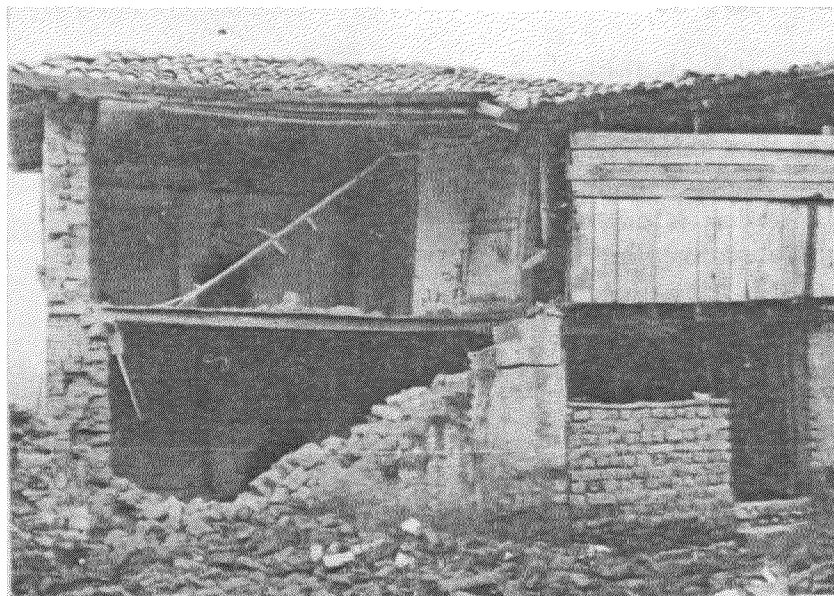


FIG. 11

Another two storied adobe building. Wall thickness of the ground floor is 1 1/2 times that of the upper floor. The upper floor is covered by a timber roof and tiles. Fireplaces are seen in both stories, indicating that the related spaces are for living. Timber floor and ceiling are able to provide sufficient diaphragm effect. However, the front walls neither had enough connection to the side walls, nor to the diaphragms. Cracks are observed in the non-bearing walls, over the fireplace arches.