

1 ken in 'kyōna' measurement - 65 'shaku' - 1,969.5 mm - 6.46 ft.
 in 'nakana' measurement - 60 'shaku' - 1,818.0 mm - 5.97 ft.

wall skeleton elevation
 scale 1:40

Fig. 5 Details of wall-skeleton construction (after Engel (2)).

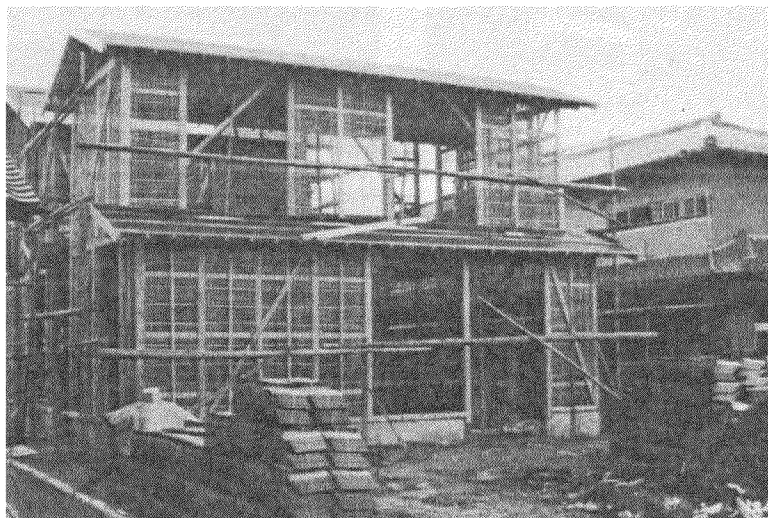


Fig. 6 Framed-up house with lath installed, prior to application of mud. Note roof tiles in foreground.

The result is shown in Fig. 6, which is a framed-up house, with temporary and some permanent bracing, prior to the application of the mud to the installed bamboo lath (note the heavy roof tiles in the foreground). Application of the mud, which is a common clay-sand mixture with chopped straw mixed in, is by simple troweling to the bamboo lath, Fig. 7, one side at a time. Note in Fig. 7 that lath and mud are used over doorways so that a weak frame action can be accomplished (this shall later be referred to as a "pierced wall"). Fig. 8 shows the reverse

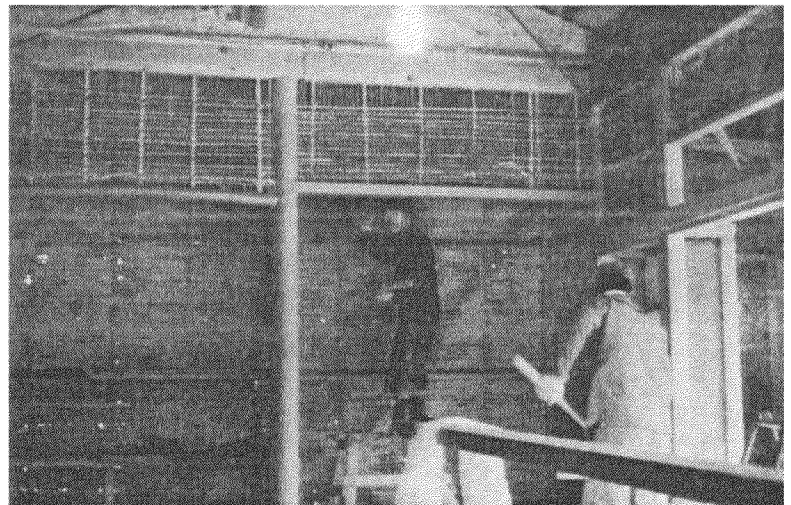
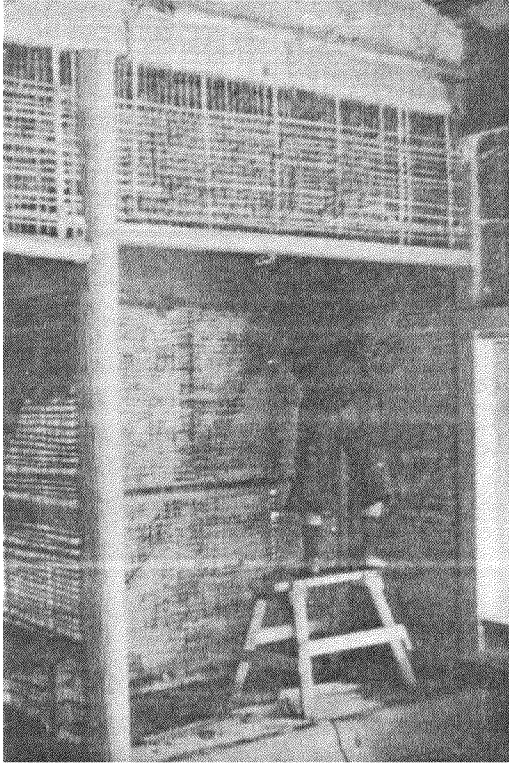


Fig. 7 Application of the mud to the bamboo lath.