

Figure I-10: Collapsed Freeway Overpass. Two motorists were killed by a freeway bridge collapse in this area. (Los Angeles Department of Water and Power photo)

LEARNING FROM EARTHQUAKES

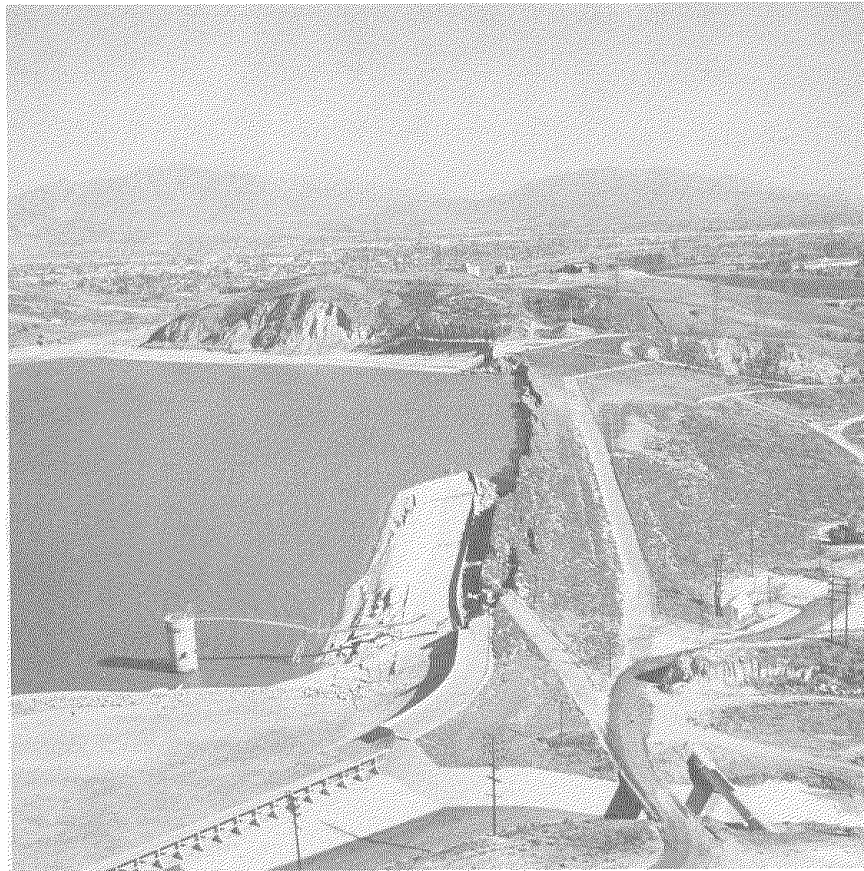


Figure I-11: Partially Collapsed Old (1911) Lower Van Norman Dam. Eighty thousand people were evacuated from the area below the dam; however, the reservoir water was successfully contained by the damaged dam. (Los Angeles City Fire Department photo)



Figure I-12: Damaged Electrical Circuit Breakers at the Sylmar Converter Station. Total damage at this station was about \$25 million and required about one year to repair. (Los Angeles Department of Water and Power photo)