

6. SAUTEURS AND ST. PATRICK'S PARISH

General Statement

Sauteurs has a population of 1,418 and the parish has a population of 10,132. The Sauteurs economy is based on fishing and agriculture. Many residents drive to St. George's for employment which is a 40 mile round trip commute. Unemployment in St. Patrick's is high causing social problems and significant praedial larceny. Residents in self-help efforts have helped restore roads, improve drainage, and construct and maintain community centers.

Most of the town of Sauteurs is set atop a bluff. As a result, storm damage from wave action does not propose an immediate threat. However, numerous houses to the west have been built on what is now the high water mark. Some residents have even had to move their houses inland indicating that beach erosion poses a significant threat. These houses, of which at least 20 exist, would be exposed to high winds and strong wave action during a storm.

In St. Patrick's parish wide beaches have been eroded by ill conceived construction practices, (e.g. in-fill in the Queen's Park area in St. George's parish). Sand mining and siltation, (e.g. circulation pattern around Grenville has been altered and the beach is disappearing).



Public Lavatories close to seafront.

6.1 IDENTIFICATION OF PROBLEM AND RISK
 6.1.1 Matrix: Sauteurs

<u>INFRASTRUCTURE</u>	<u>HAZARD</u>	<u>CAUSE-EFFECT LINK</u>	<u>FREQUENCY PATTERN</u>	<u>FACTORS TO BE NOTED</u>	<u>CONDITION</u> 4:excellent 3:good 2:fair 1:poor 0:none
1. TRANSPORTATION					
				<u>Roads:</u>	
Roads	Flood	Poor drainage	Heavy rainfall	.Proximity to cliffs and shoreline	2
	Landslide	Silting	Hurricane season	.Drainage	1
	Rockslide	Blocked culvert	yearly	.Building lines in relation to width	2
	Tidal surge	Proximity to sea Erosion		.Surface condition and maintenance	1
				<u>Bridges:</u>	
Bridges	Rainstorm	Silting	Heavy rainfall	.Age and structural stability	2
	Flood	River overflow Erosion	Hurricane season	.Load capacity	3
				.River banks	2
				.Tree trunks	2
				.Obstruction in river bed from boulders	3
				<u>Seaport/Marinas:</u>	
				.Ocean depths	1
				.Damage wharves	1
				.Erosion of shoreline	1
				.Absence of navigational beacon	0
				.Silting from drains	1
				.Debris and floatsam heavy rains	2
				.Jetties	0
				.Storage sheds	0
2. COMMUNICATION					
				<u>Postal:</u>	
Postal	Windstorm	Proximity to sea	Heavy rainfall	.Location	1
	Rainstorm	Poor drainage	Hurricane season	.Security	1
	Flood	Poor location and security. Erosion			
				<u>Telephone:</u>	
Telephone	Windstorm	Wood rot	Heavy rainfall	.Location of poles	2
	Landslide	Erosion	Hurricane season	.Condition of poles and stays	2
	Rockslide			.Siting of public boxes	0
	Fire			.Height of overhead lines above terrain and roads	2 1
				.Overhanging trees and foliage over transmission lines.	2
				<u>Radio:</u>	
Radio	Windstorm	Wood rot	Heavy rainfall	.Location of station, masts and stays	3

Poor security	.Power supply	2
Erosion	.Poor security	1
Toppling of antennas		

3. HEALTH

Health Centre	Windstorm	Damage	Heavy rainfall	<u>Health:</u>	
	Rainstorm	Erosion	Hurricane season	.Health centre, medical station	2
				.Location of structure to be away from flood areas.	2
				.Easily accessible to community by motor vehicle.	4
				.Buildings to be in good state of repair.	4
				.Equipment to be servicable	3
				.Importation units equipped with emergency services.	3
				.Proper disposal wastes	3
				.Pleasant landscaping	3

4. EDUCATION

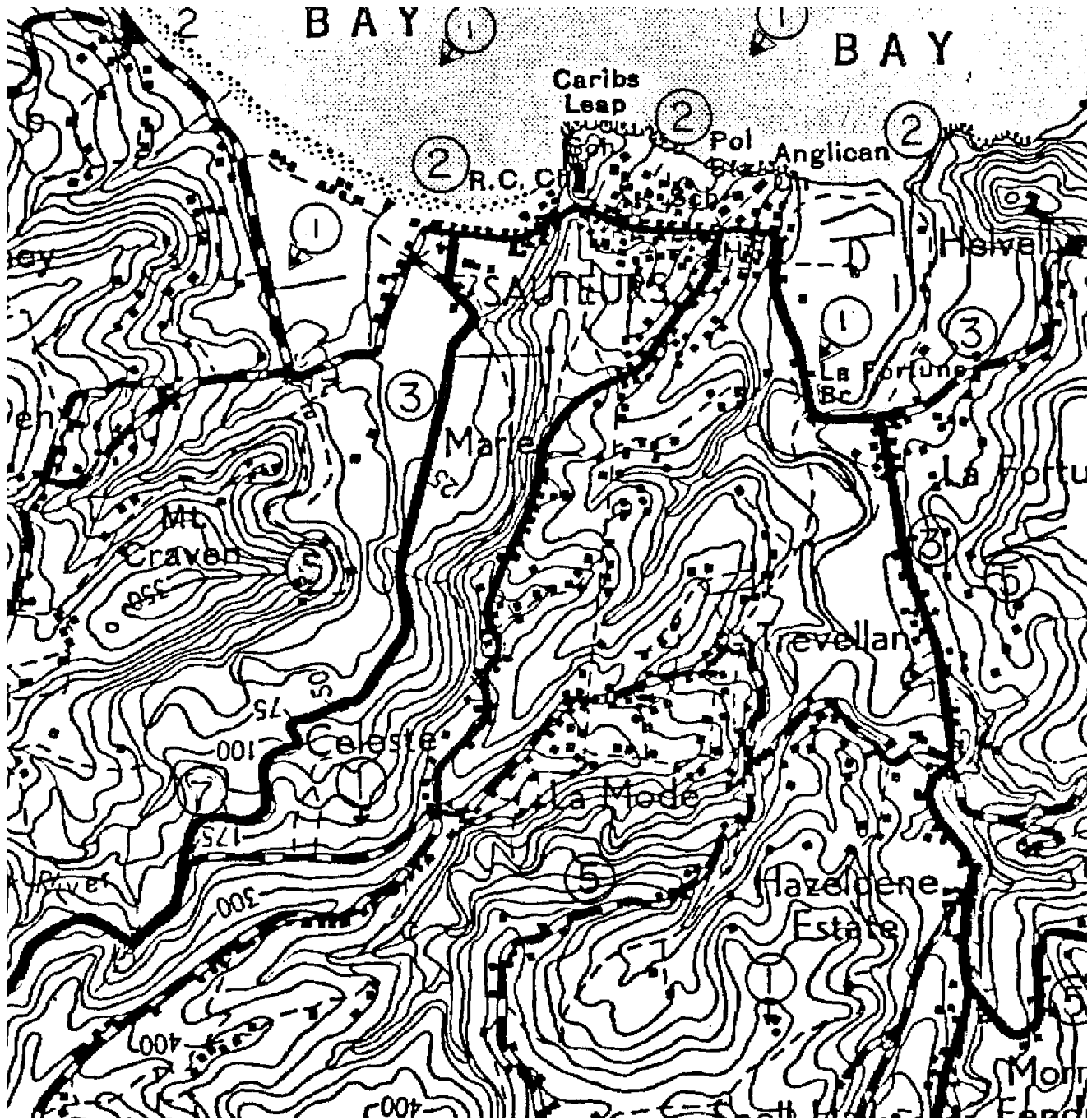
Classroom building and playgrounds	Windstorm	Damage	Heavy rainfall	<u>Education:</u>	
	Rainstorm	Erosion	Hurricane season	.Location of buildings away from areas subject to flood, erosion or landslide	1
	Erosion	Steep embankment	Yearly	.Proximity to settlements	2
	Flood			.Proper and regular maintenance of building.	1
				.Adequate toilet facilities	2
				.Basic amenities of water & electricity	2
				.Emergency exits	1
				.Adequate space around building to avoid stampede in emergency.	2

5. SERVICE

Police	Windstorm	Damage	Heavy rainfall	<u>Police:</u>	
	Rainstorm	Proximity to sea	Hurricane season	.Immediate response to fires and criminal disturbances.	1
		Erosion		.Carry out regular check of industrial and commercial premises.	0
				Advice on location of gasoline station	1
Water	Windstorm	Silting	Heavy rainfall	<u>Water:</u>	
	Rainstorm	Blocked culvert	Hurricane season	.Maintenance of dams, reservoirs and services lines, public and domestic lines.	2
				.Eliminate waste	2
Market	Tidal surge	Proximity to sea	Heavy rainfall		
		Erosion	Hurricane season		
Church	Windstorm	Steep embankment	Heavy rainfall		
	Rainstorm	Erosion	Yearly		
	Landslide	Damage			
	Rockslide	Cracked retaining wall			

6. ENERGY

Windstorm	Overloaded poles	Heavy rainfall	Electricity:	
	Overhanging trees		.Faulty electricity poles	3
	Wood rot		.Sagging lines	3
			.Interruptions of service	2
			.Load shedding	2
			.Location of poles near roadway	2
			.Transformer location and maintenance	3
			.Tree cropping	3
Fire			Petrol-gas:	
			.Retail gas stations in built-up areas and proximity to schools, Health centre and community halls.	1
			.Location of bulk storage tanks retail	1
			.Outlets for gas cylinders	0



6.1.2
RISK ASSESSMENT MAP
 Sauteurs
 Parish St. Patrick
 Scale 1:12500



- | Type of hazard | |
|----------------------------|--|
| 1. Wind Action | 7. Erosion |
| 2. Wave Action/Storm Surge | 8. Explosion and Fire |
| 3. Flood | 9. Silting |
| 4. Earthquake and Landfill | 10. Area of poor housing/
High density/Low Sanitation |
| 5. Landslide/Slippage | 11. Subsidence |
| 6. Rockslide | |