

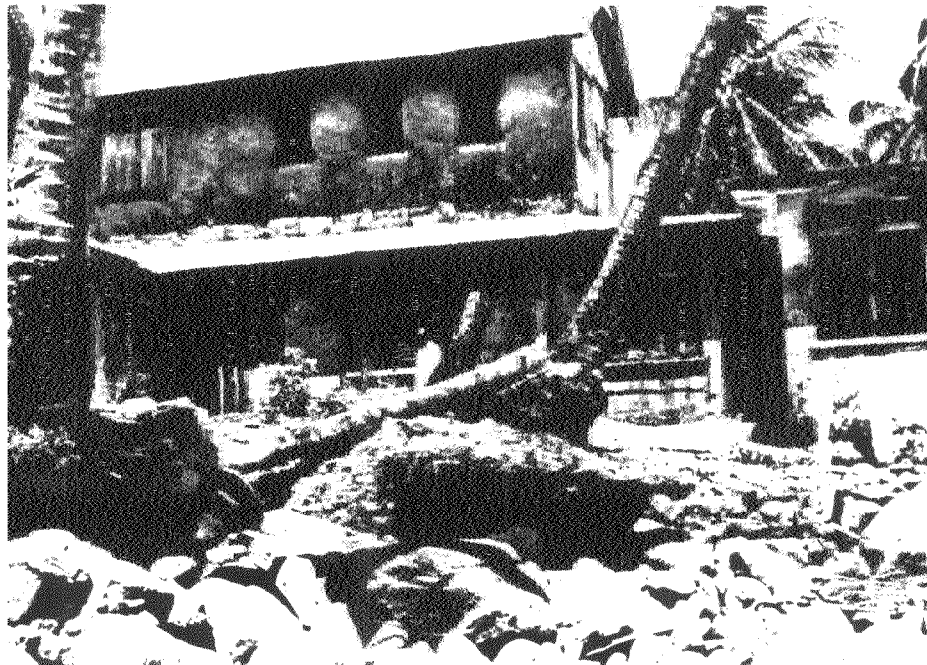
5. VICTORIA AND ST. MARK'S PARISH

General Statement

The parish of St. Mark's has a population of 3,968 habitants. The population is distributed in 13 settlements of which Victoria is the largest with a population of 1,760 hab. Victoria includes the majority of services in the parish including a pre-primary school, one primary school, post office, police station and nutmeg station. Access to Victoria from St. George's will improve dramatically with the completion of the Western Main Road Project.

Water supply and sewerage disposal are a problem in Victoria. Residents must walk up to one-half a mile to get water from a standpipe. Health problems such as gastroenteritis is reported quite high among children age 1-3.

Water mains are buried and along the West coast where they lie close to the coastline, severe corrosion and frequent breaking is characteristic. There is only minimal storage on Grenada and consumers suffer shortage due to seasonality in flow.



The North facade of the church is affected by erosion.

5.1 IDENTIFICATION OF PROBLEM AND RISK

5.1.1 Matrix: Victoria

<u>INFRASTRUCTURE</u>	<u>HAZARD</u>	<u>CAUSE-EFFECT LINK</u>	<u>FREQUENCY PATTERN</u>	<u>FACTORS TO BE NOTED</u>	<u>CONDITION</u> 4:excellent 3:good 2:fair 1:poor 0:not		
<u>1. TRANSPORTATION</u>							
Roads	Flood	Poor drainage	Heavy rainfall	<u>Roads:</u> .Proximity to cliffs and shoreline.	1		
		Landslide	Silting	Hurricane	.Building lines in relation to sea.	1	
	Rockslide	Blocked culvert	Proximity to sea	.Surface condition and maintenance.	2		
		Erosion	Low lying land	<u>Bridges:</u> .Age and structural stability	1		
	Steep embankment	River overflow	Cracked retaining wall.	.Load capacity	1		
	Bridges	Rainstorm	Silting	Proximity to sea	.River banks	1	
			Tidal surge	River overflow	.Tree trunks	-	
		Flood	Debris piles NR	.Obstruction in river bed from boulders.	1		
		Postal	Windstorm	Proximity to sea	Heavy rainfall	<u>Postal:</u> .Location	3
				Poor drainage	Hurricane season	.Security	2
Flood			Blocked culvert	<u>Telephone:</u> .Location of poles	2		
Fire			.Condition of poles and stays.	1			
Telephone	Windstorm	Wood rot	Heavy rainfall	.Siting of public boxes	1		
	Landslide			.Height of overhead lines above terrains and roads.	1/2		
	Rockslide			.Over hanging trees and foliage over transmission lines.	3		
	Fire				3		
<u>3. HEALTH</u>							
Public Lavatorie	Windstorm	Proximity to sea	Heavy rainfall	<u>Health:</u> .Location of structure away from flood areas.	1		
	Rainstorm		Hurricane season	.Access to community	3		
	Tidal surge						

by motor vehicle.
 .State of repair of building. 1

Medical Station	Windstorm Rainstorm	Proximity to sea Wood rot	Heavy rainfall	.Equipment to be servicable 2 .Proper disposal of wastes 1 .Pleasant landscaping 2
-----------------	------------------------	------------------------------	----------------	--

4. EDUCATION

Classroom buildings and playgrounds	Windstorm	Poor drainage	Heavy rainfall	.Locstion of buildings away 1
	Rainstorm	Damage	Hurricane season	subject to flood, erosion or landslide.
	Tidal surge	River overflow		.Proximity to settlements 2
	Flood	Blocked culvert		.Proper and regular 1
	Fire			maintenance of building. 1 .Adequate toilet facilities 3 .Basic Amenities of water and electricity. 3 .Emergency exits 1 .Adequate space around building to avoid stampede in emergency. 1

5. SERVICE

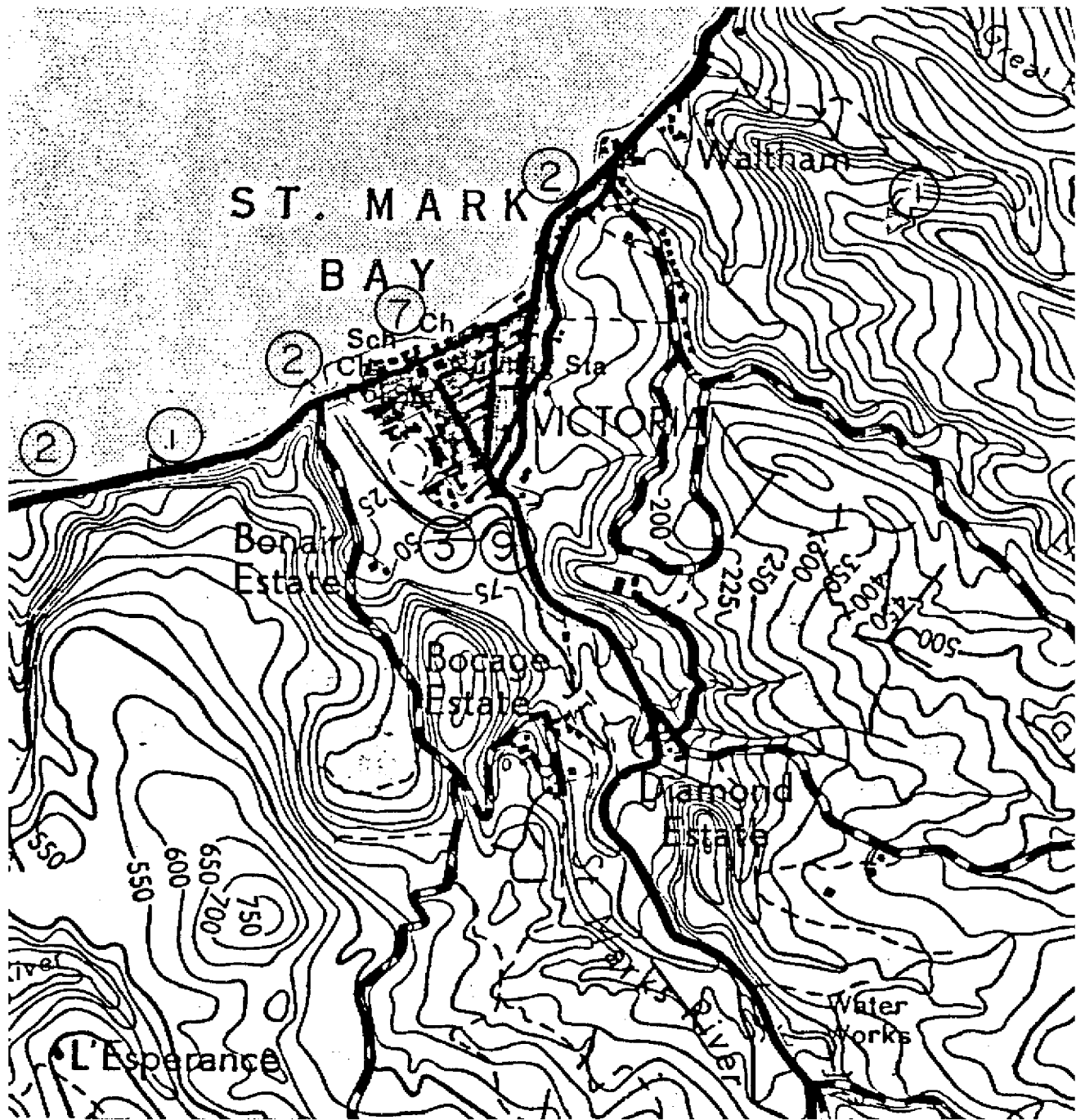
Police	Windstorm	Proximity to sea	Heavy rainfall	<u>Police:</u> .Immediate response to fires 2
	Rainstorm	Damage	Hurricane season	and criminal disturbances.
	Tidal surge			.Carry out regular check of industrial and commercial premises. 0
Water	Windstorm	Silting	Heavy rainfall	<u>Water:</u>
	Rainstorm	Blocked culvert	Hurricane season	Maintenance of dams, reservoirs and services lines, public and domestic supply lines. 2
		Erosion River overflow		
Play field	Rainstorm	River overflow	Heavy rainfall	.Eliminate waste 2
	Flood		Hurricane season	<u>Sewerage:</u> Monitor outfalls of public discharge. 0 .Check private disposal systems. 1 .Maintain good upkeep of vehicles. 1
				<u>Transport system:</u> .Improve scheduled operations 2 .Clearly define bus stops 0 .Drivers to pass proper test 3
Market	Tidal surge	Proximity to sea	Hurricane season	
Church	Windstorm	Damage	Yearly	
	Rainstorm			
	Tidal surge			

ENERGY

Electricity:
 .Faulty electricity poles 0
 .Sagging lines 0
 .Interruptions of service 2
 .Load shedding 3

Fire

.Location of poles near roadway.	All poles planted on roadway.
<u>Petrol-gas:</u>	
.Retail gas stations in built-up areas and proximity to schools, health centre and community halls.	All located in built-up area close to health centre in Victoria.
.Location of bulk storage tanks retail.	0
.Outlets for gas cylinders.	0



5.1.2 RISK ASSESSMENT MAP

Victoria

Parish St. Mark

Scale 1:12500

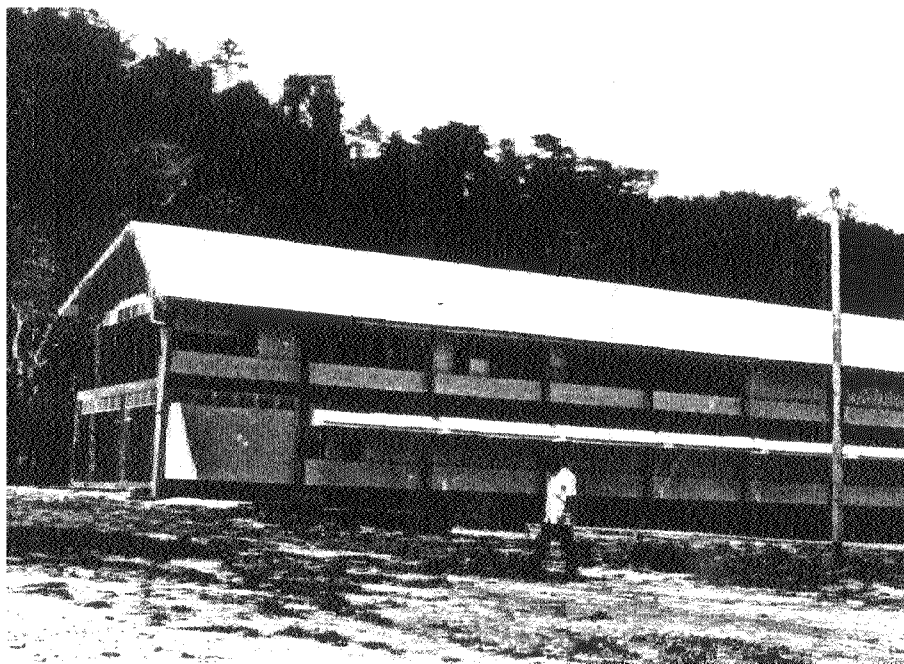
- | | |
|----------------------------|--|
| 1. Wind Action | 7. Erosion |
| 2. Wave Action/Storm Surge | 8. Explosion and Fire |
| 3. Flood | 9. Silting |
| 4. Earthquake and Landfill | 10. Area of poor housing/
High density/Low Sanitation |
| 5. Landslide/Slippage | 11. Subsidence |
| 6. Rockslide | |

5.2 RECOMMENDED ACTIONS

5.2.1 Short Term Action	Responsible Agency
.Construct a containing wall along St. Marks river to protect schools and housing area from flooding. It may be necessary to provide larger drains around school compounds to connect to storm drains.	Comm. and Works
.Prohibit and prevent construction close to St. Marks river bed and flood plain.	Physical Planning Unit Planning Dept.
.In seashore, monitor early signs of erosion.	Port Authority
.Undertake renovation of seawalls and clear silt.	Comm. and Works
.Church located at seashore is affected by erosion (wave action) The church is in a danger state.	Planning Dept.
.Routine investigation of main pipes for damage. Repair deficiencies.	Central Water Commission
.Sewerage: prevent damages and report to Health Dept. any unusual discharge into public drains, high stench from septic tanks and pit latrines, overflowing manholes. Carry out works.	Public Health Comm. and Works
.Repair or close abandoned wooden/iron bridge at the entrance of Victoria.	Comm. and Works
5.2.2 Long Term Action	Responsible Agency
.Mount an educational campaign about the benefits of appropriate pit latrine design to minimize gastro intestinal diseases, hepatitis, and	Ministry of Health

- typhoid.
- .Investigate/control environmental hazards.
 - .Total upgrading of housing and sanitary conditions in urban area and surrounding settlements conserve agricultural lands.

Public Health



School is constructed in a flood area close to St. Mark's river.